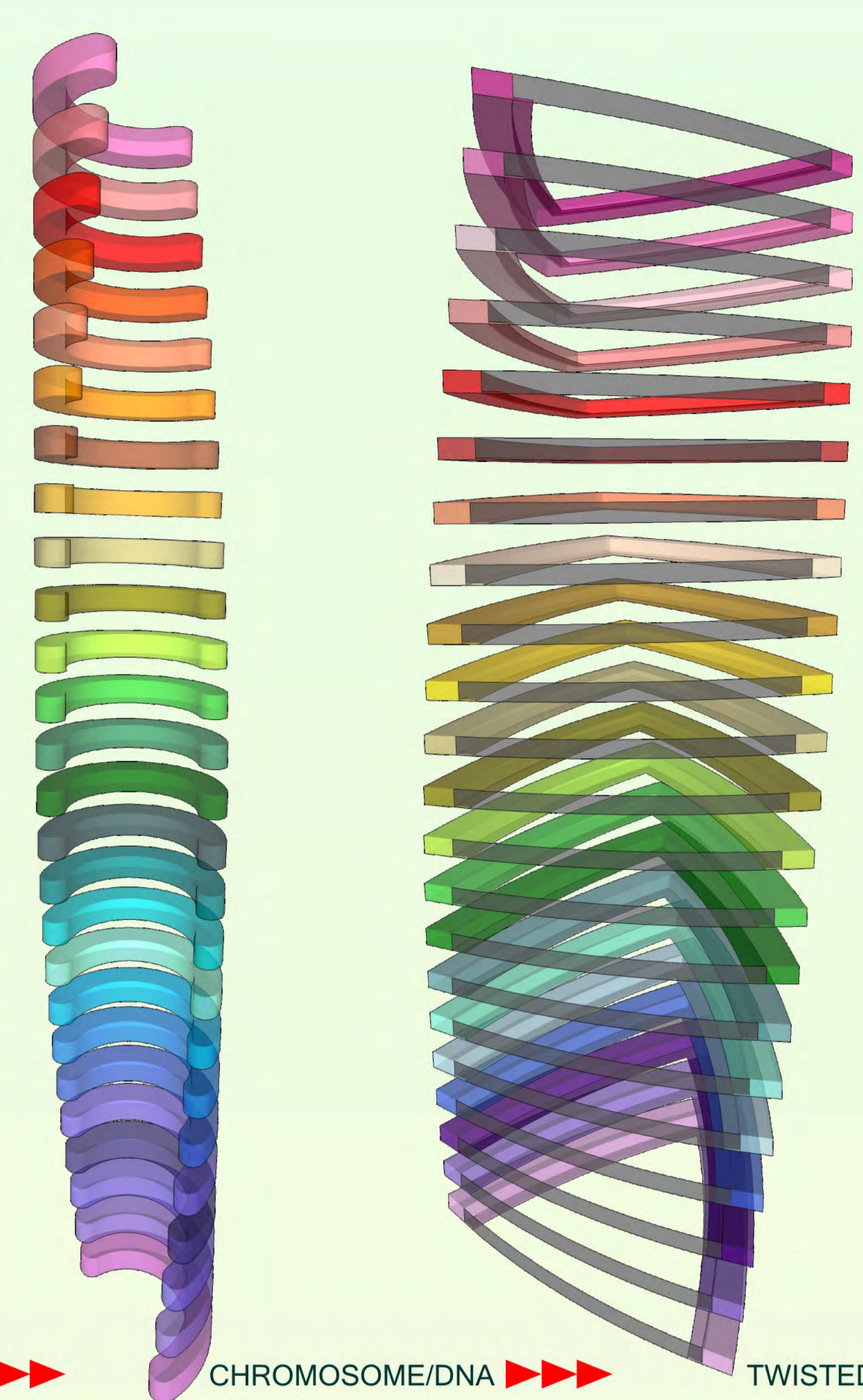
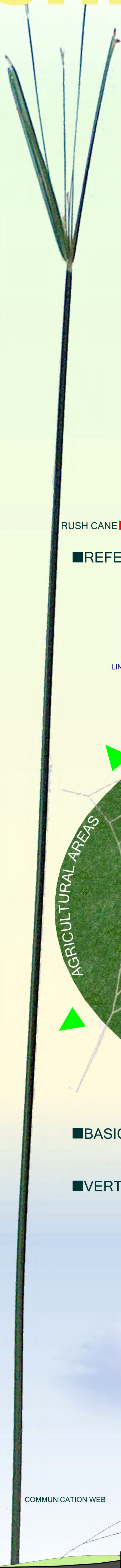


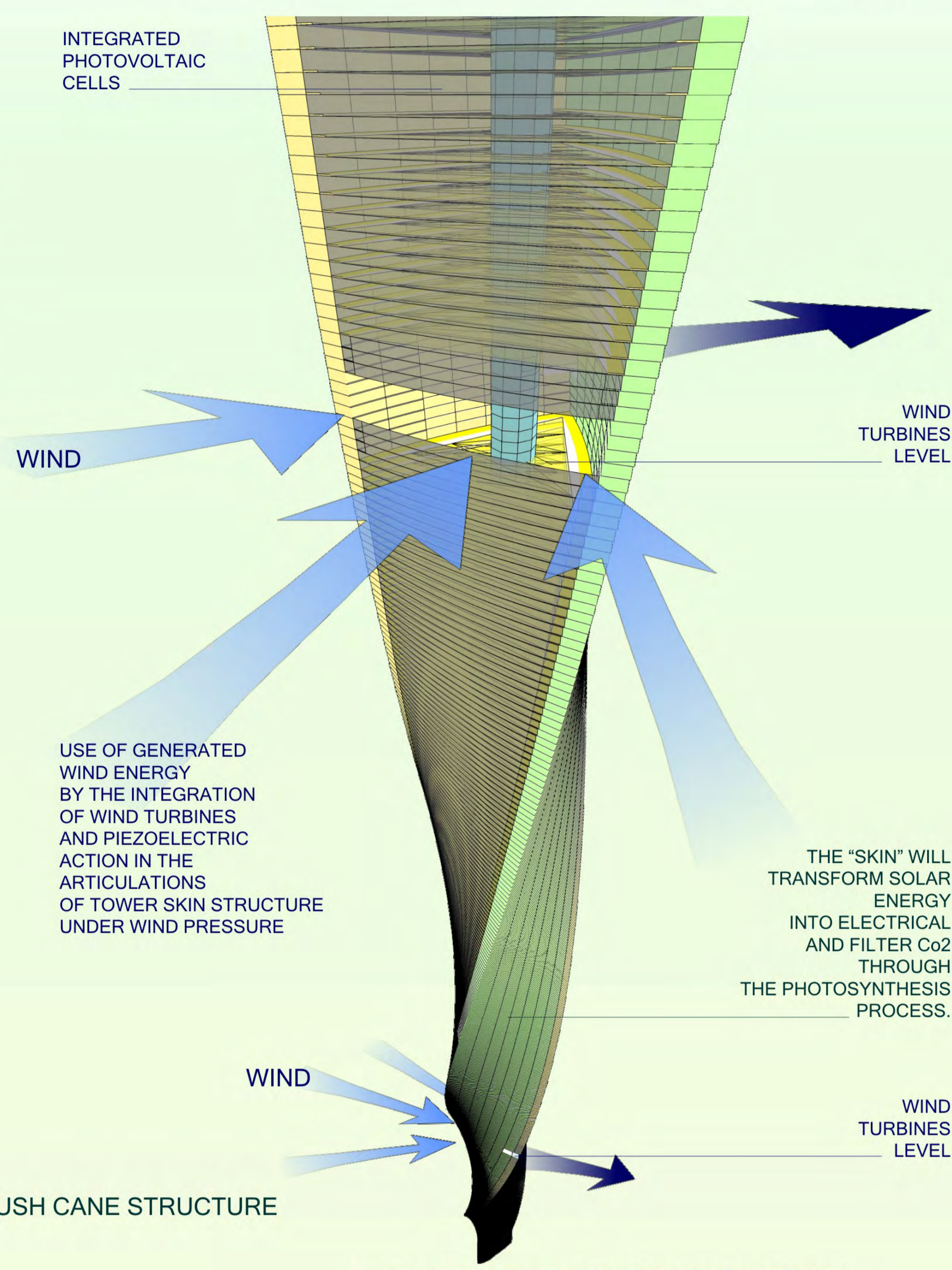
CHLOROPHYLL CITY

0247

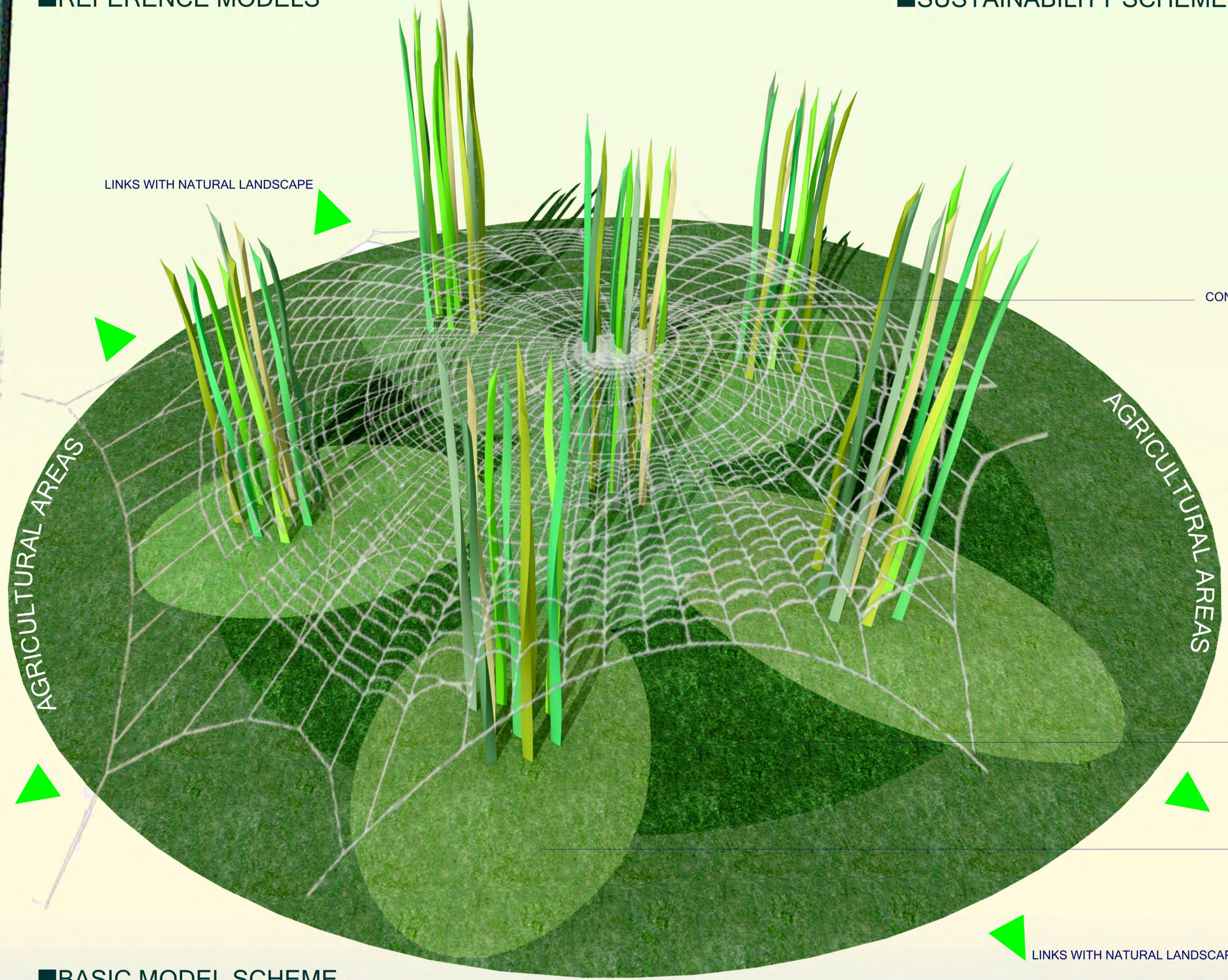


RUSH CANE CHROMOSOME/DNA TWISTED RUSH CANE STRUCTURE

■ REFERENCE MODELS

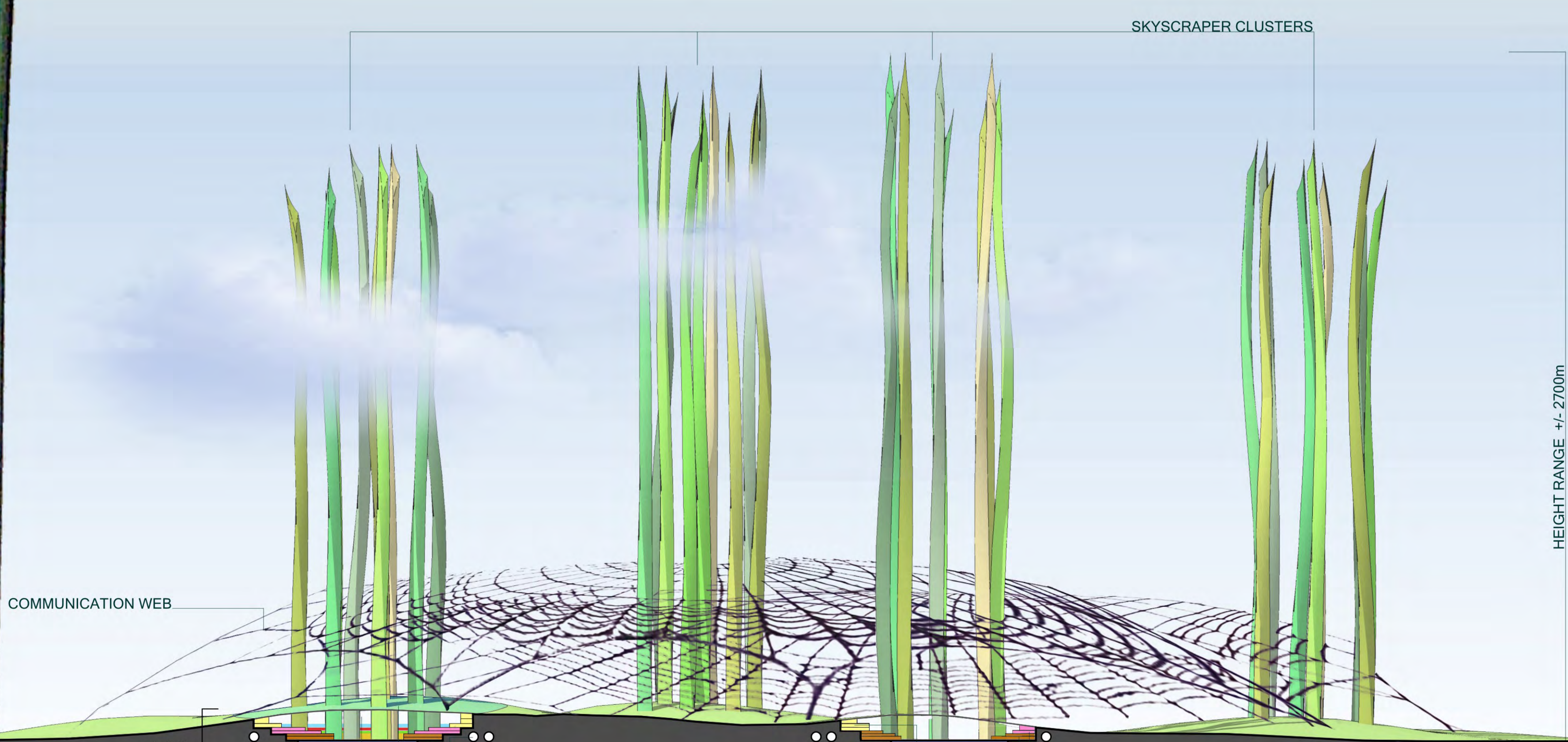


■ SUSTAINABILITY SCHEME



■ BASIC MODEL SCHEME

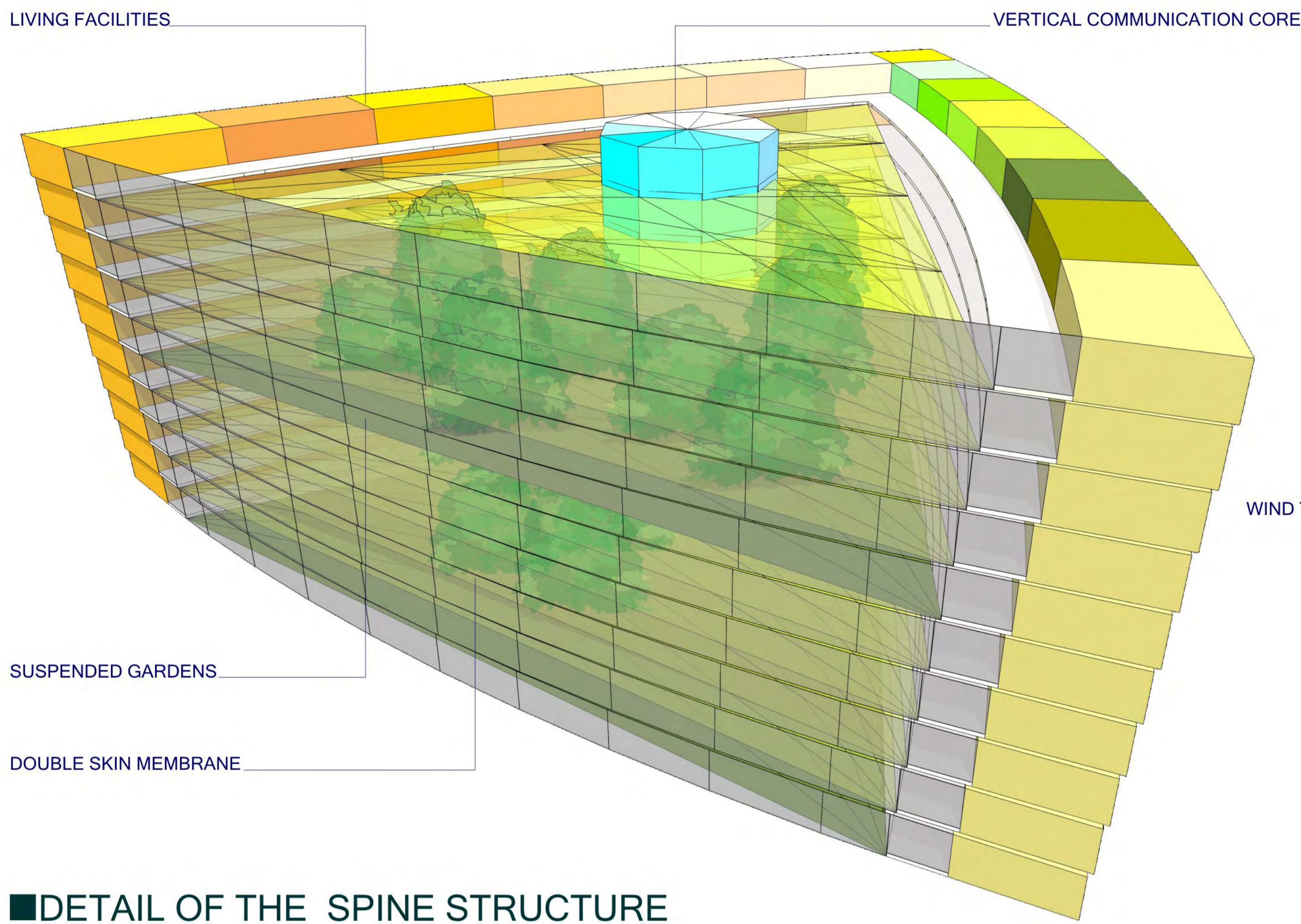
■ VERTICAL FUNCTIONAL SCHEME



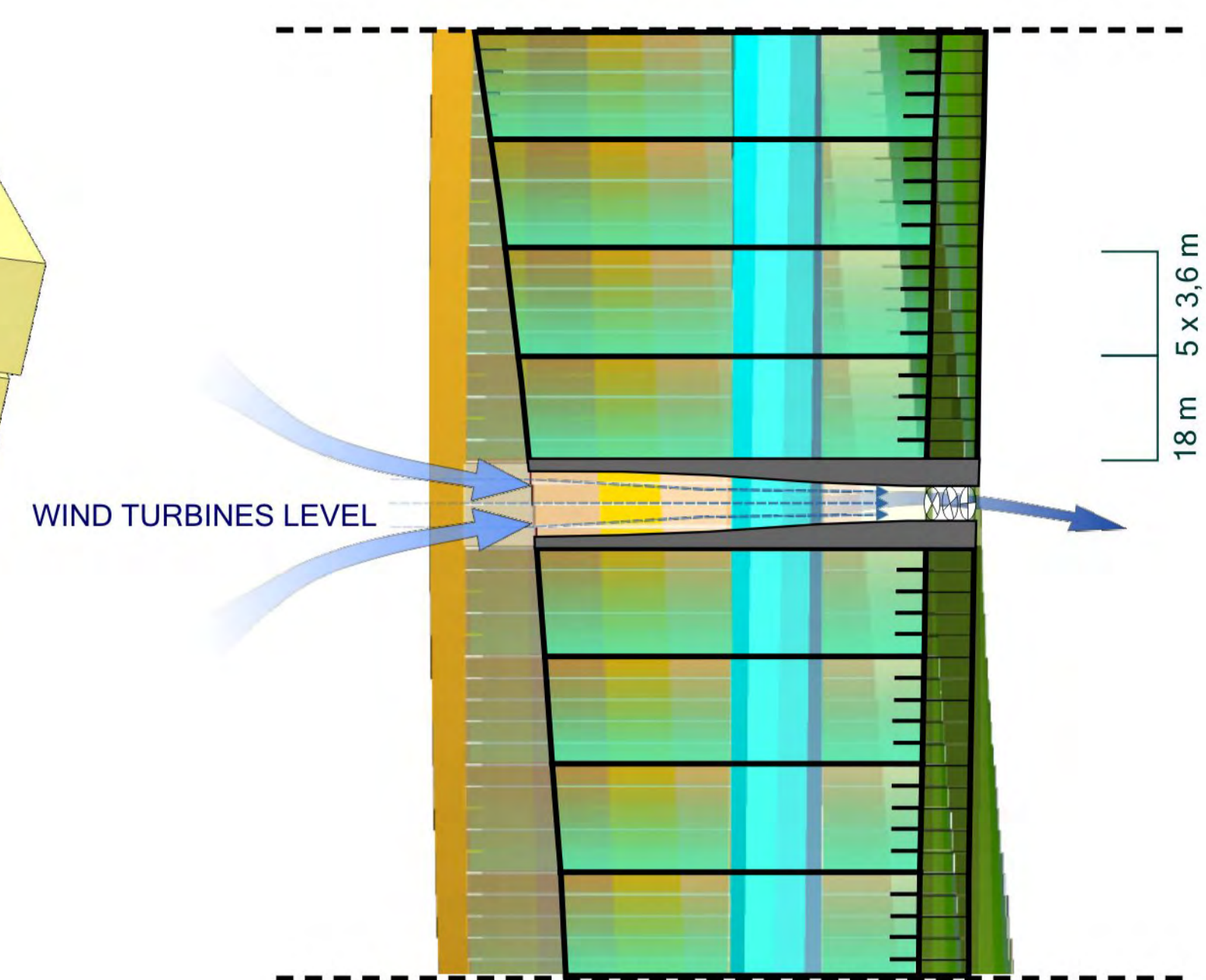
- RESEARCH & LIGHT INDUSTRY
- UNDERGROUND HORIZONTAL COMMUNICATION LINKS
- EDUCATION
- RAIN WATER TANK & WATER TREATMENT PLANT
- TRASH COMBUSTION PLANT
- CULTURE
- INNER URBAN PARK FACILITIES
- CO2 FILTER MEMBRANE
- COMMERCIAL SERVICES

CHLOROPHYLL CITY

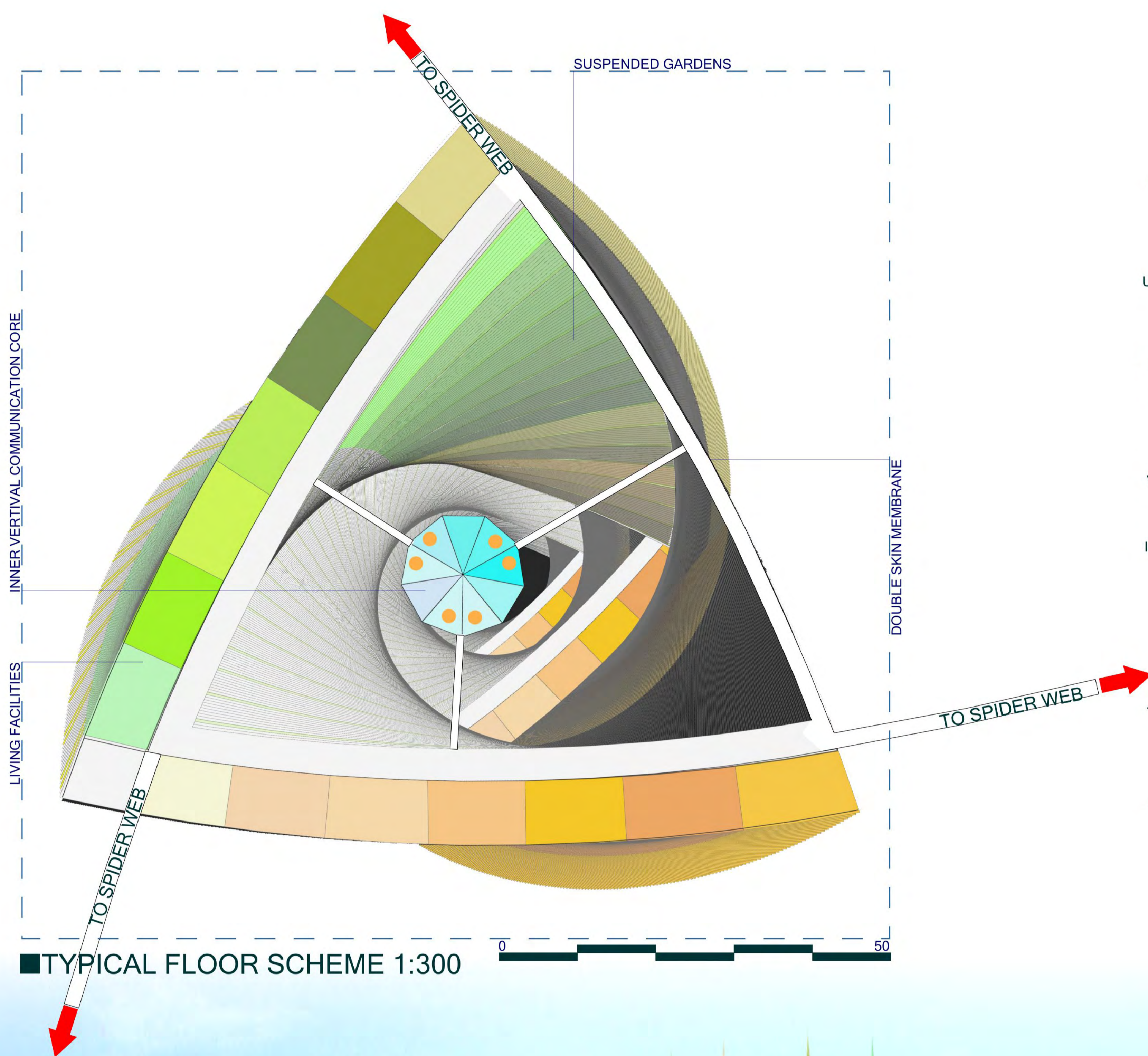
0247



■ DETAIL OF THE SPINE STRUCTURE



■ SECTION DETAIL 1:200



■ TYPICAL FLOOR SCHEME 1:300

"VERTICAL CHLOROPHYLL CITY"

OBJECTIVES:

TO FREE THE DEVASTATED NATURAL EARTH AREA FROM TRADITIONAL COLONISATION-STYLE CONSTRUCTIONS IN ORDER TO RECOVER BALANCE IN NATURE AND REGAIN IT FOR AGRICULTURAL & RECREATIONAL PURPOSES.

TO DECREASE SIGNIFICANT URBAN DISTANCES THROUGH THE CENTRALIZATION OF FULL-RANGE URBAN ACTIVITIES AND THE ESTABLISHMENT OF INNER CITY COMMUNICATION INFRASTRUCTURES IN THE FORM OF "SPIDER WEBS".

"CHLOROPHYLL CITY" THE USAGE OF SOLAR ENERGY ENTIRELY ACCOMPLISHED THROUGH AN ABSORPTION PROCESS BY THE "SKIN" OF SKYSCRAPER TRUNKS BASED ON ANALYSIS OF THE EXTERNAL RUSH CANE "SKIN" STRUCTURE.

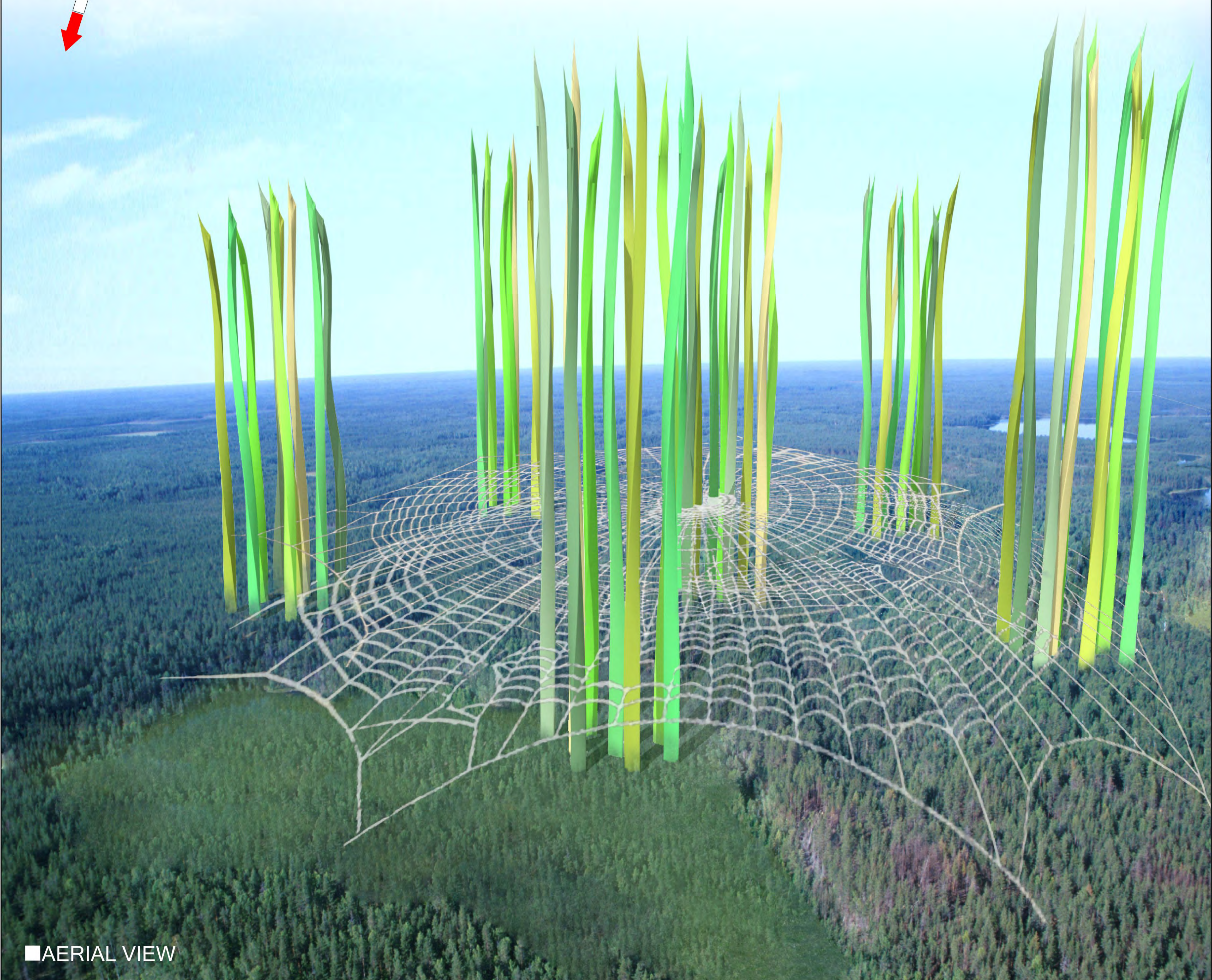
THE "SKIN" WILL TRANSFORM SOLAR ENERGY INTO ELECTRICAL (PV-TV PANELS WITH EFFICIENCY OF 3.8 WATTS/SQUARE FOOT) AND FILTER CO₂ THROUGH THE PHOTOSYNTHESIS PROCESS.

TO USE OF GENERATED WIND ENERGY BY THE INTEGRATION OF WIND TURBINES AND PIEZOELECTRIC ACTION IN THE ARTICULATIONS OF THE TOWER SKIN STRUCTURE UNDER WIND PRESSURE.

TOWER BASIS - DOUBLE SKIN WILL PLAY AN ACTIVE ROLE IN THE FILTERING OF SOLAR, WIND, AND RAIN ACTION THROUGH THE RECUPERATION OF THE NECESSARY ELEMENTS.

TOWER STRUCTURES - ELEVATIONS MADE OF DOUBLE SHELLS WITH FLOOR PLATES CONNECTING TWO FORMS VIA "TABS" - TO ELIMINATE THE USAGE OF INTERIOR COLUMNS - WILL BE REINFORCED BY VERTICAL CIRCULATION CORES.

THE EXTERNAL SURFACE IS COMPOSED OF CELLULAR TEXTURE OR STRUCTURE IN THE IMAGE OF TWISTED RUSH CANES.



■ AERIAL VIEW